



## Pine Farms Café

### Breakfast

**Breakfast On a Bun** 10

*breakfast sandwich with egg, cheese & ham, mustard & mayo on a potato scallion bun*

**Egg-cellent Breakfast Quiche** 12

*bacon & cheese quiche topped with a poached egg*

**Smoked Salmon** 16

*with scrambled eggs, croissant & fruit*

**Omelette served with toast & fruit** 12

*build your own choice of: ham, bacon, cheddar cheese, goat cheese, swiss cheese, red onion, roasted red peppers, mushrooms & apple*

**Baguette French Toast** 12

*served with pure maple syrup & fruit*

**Banana Bread French Toast** 14

*served with pure maple syrup & fruit topped with walnuts*

**“Just Toast”** 5

*two pieces of toast with jam & fruit*

**Homemade scone, muffin, croissant or pastry**

*see our daily selection in the pastry case*

**Sides**

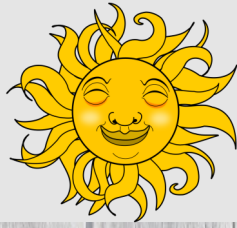
*Three pieces of bacon, pork sausage, or turkey sausage* 4

*One egg, scrambled or poached* 2

*Smoked salmon* 6

*\* Toast choices: White Sourdough, Multigrain, Marble Rye or Gluten Free*

*Breakfast is served 9am to 10:30am*



## Beverages

Coffee

Tea

Café Latte

Cappuccino

Mocha

Americano

Espresso

Hot Chocolate

Hot or Cold Fresh Pressed Apple Cider

Apple Juice

Mango juice

Milk

Assorted drinks in the cooler

*Thank you for visiting our farm today.*



Pine Farms Orchard



Pine\_Farms\_Orchard



PineFarmsApples